

## CERAMIC ENGRAVING TECHNOLOGIES

Engraving Technologies for each Area of Application



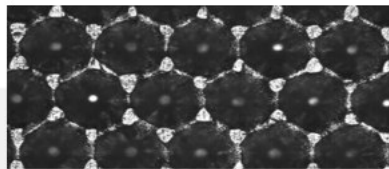
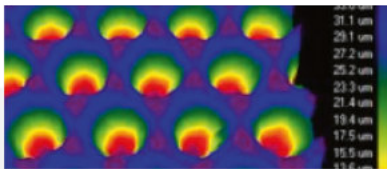
www.pmm-werbung.de | 14804



Zecher GmbH  
Görlitzer Straße 2 • 33098 Paderborn • Germany  
Tel. +49 5251 1746-0 • [contact@zecher.com](mailto:contact@zecher.com)  
[www.zecher.com](http://www.zecher.com)

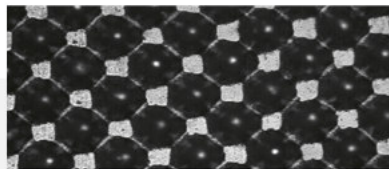
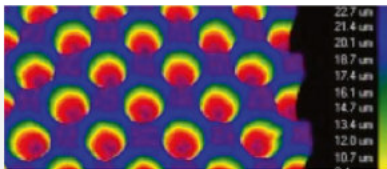


The right engraving technology for each area of application – we have the ideal anilox roller engraving to hand.



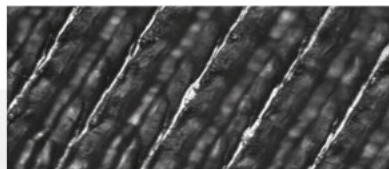
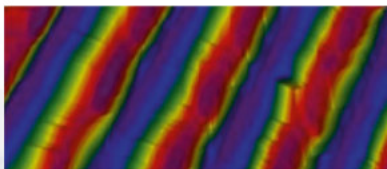
**HEXA 60°**

The Hexa 60° is an established standard engraving technology for high quality applications in the Flexo or Coating industry.



**DIAMOND 45°**

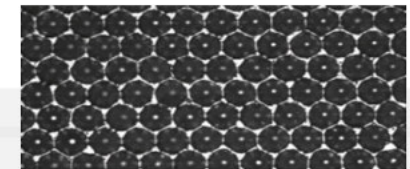
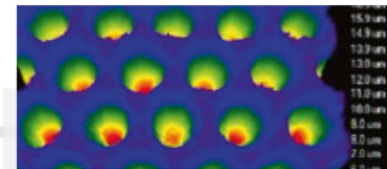
In the Flexo industry this engraving has mostly been replaced by Hexa 60° but is still used for special applications.



**TRIHELICAL**

The open cell engraving Trihelical, also known as "Haschur", serves to widen the standard engraving range or as a technological alternative.

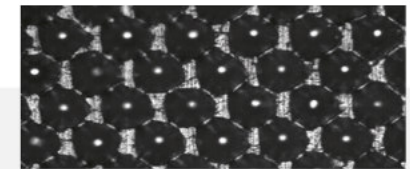
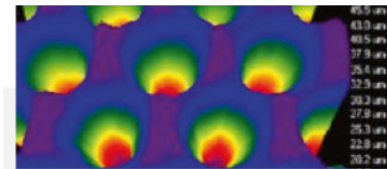
The Trihelical engraving provides a very good transfer due to the open engraving line structure, which is suitable for large-area printing and coatings.



**HD READY - FULL HD**

The HD Ready or Full HD Anilox enables printing in perfect HD quality.

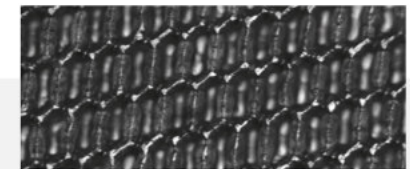
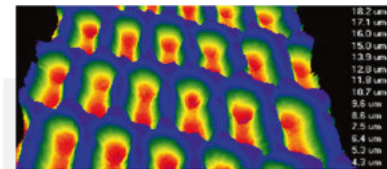
The HD Ready or Full HD engraving is an Esko certified engraving for high resolution applications.



**H.I.T.**

The open cell engraving H.I.T. serves to widen the standard engraving range or as a technological alternative. The H.I.T. is a classic 60° engraving, characterised by

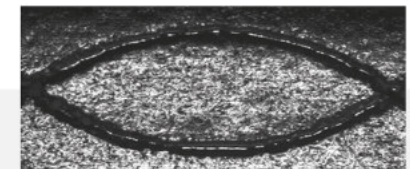
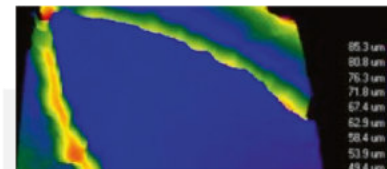
specially engraved hanging cell walls. The intentionally reduced cell walls help to minimize the pinhole effect especially in applications of white and varnish.



**STEPPEDHEX**

The open cell engraving SteppedHex serves to widen the standard engraving range or as a technological alternative. In comparison to a standard 60° engraving, the SteppedHex

technology offers the possibility to increase the resolution without losing volume, due to a unique cell connection. Also this engraving is based on the 60° angle.



**CUSTOMISED**

We are able to manufacture special laser engravings which are based on individually designed TIFF data.

By this, special shapes and application ranges can be covered.