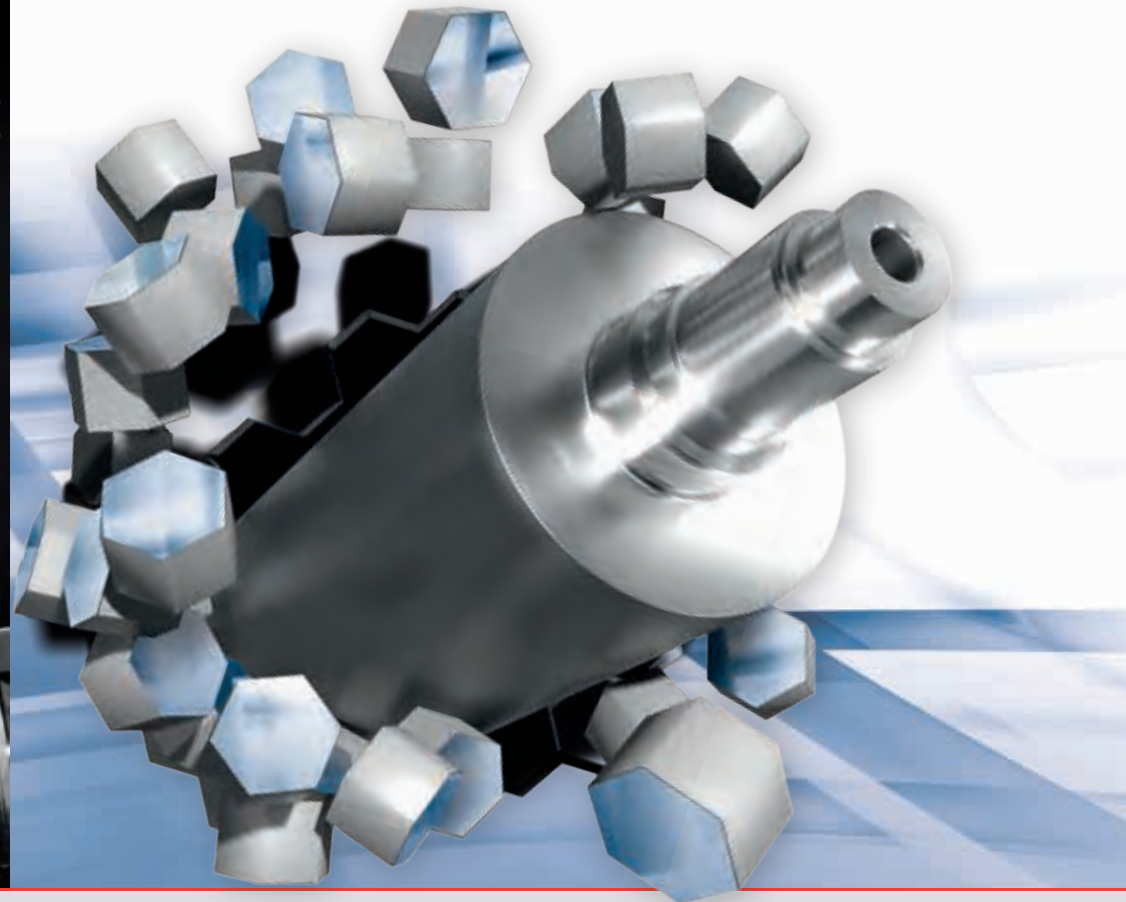


STEPPEDHEX TECHNOLOGY

Innovative Engraving Technology from Zecher



www.pmr-werbung.de | 14871



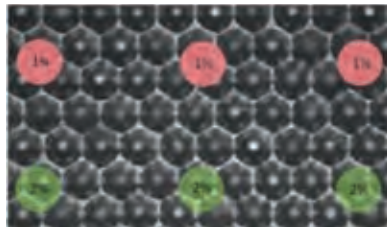
Zecher GmbH
Görlitzer Straße 2 • 33098 Paderborn • Germany
Tel. +49 5251 1746-0 • contact@zecher.com
www.zecher.com



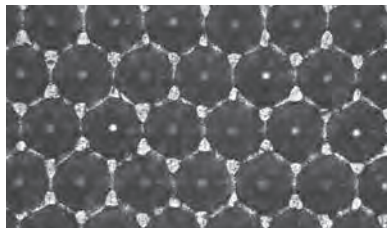
INNOVATIVE ENGRAVING TECHNOLOGY

The SteppedHex technology, protected by a German utility model, is characterised by its unique, specially staggered cell geometry. The engraving is based on the familiar 60° angle, with the connection of just three consecutive conventional cells. In order to let you take full advantage of this open engraving system, we have optimised the levels of resolution (L/cm) with respect to the corresponding volume.

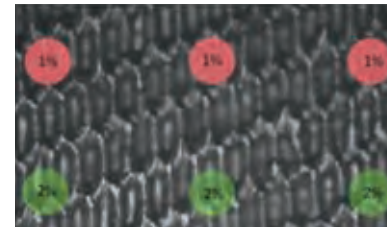
If you have any further questions, please consult with the Zecher team. We will be happy to advise you, and act jointly to find the best specification for your requirements.



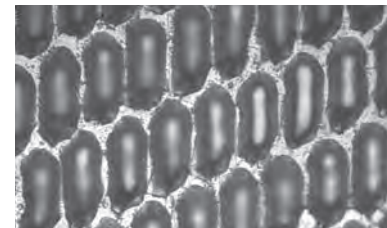
400 L/cm; 4,0 cm²/m² Hex, 60°;
1% + 2% tonal value, 60 L/cm



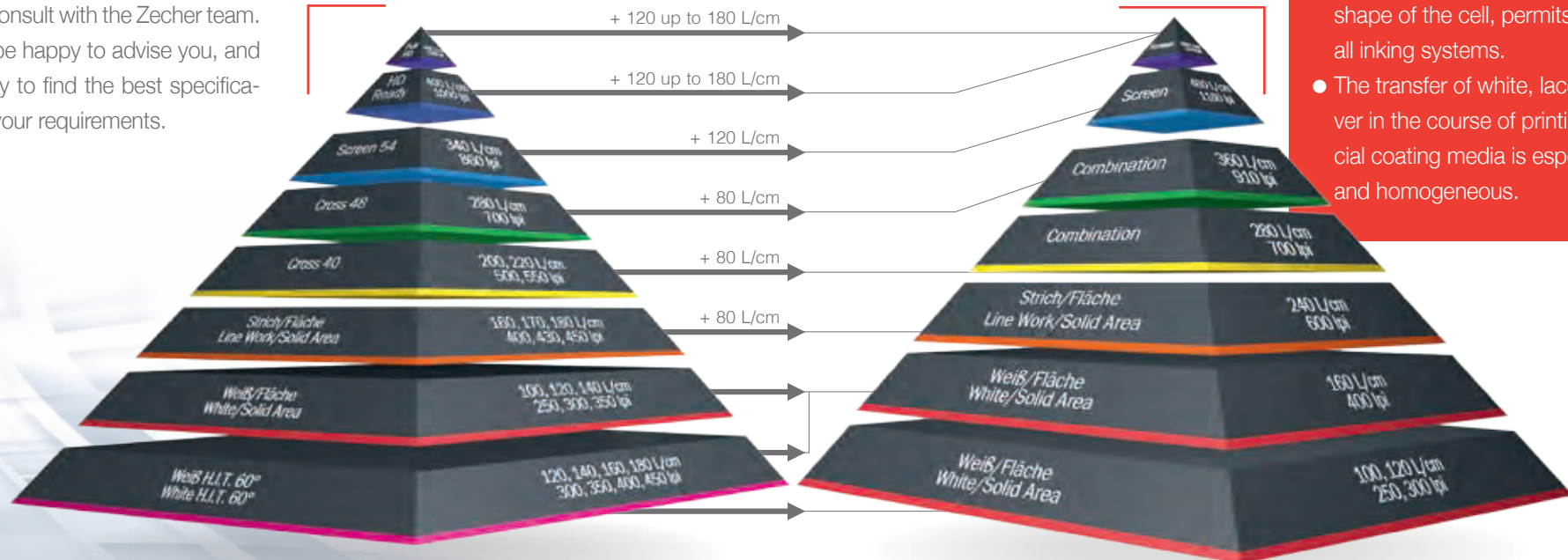
Hexa 60°



580L/cm; 4,0 cm²/m² SteppedHex;
1% + 2% tonal value, 60 L/cm



SteppedHex 60°



TECHNICAL BENEFITS

- Higher resolution, without any significant loss of volume.
- Smooth running of your doctor blade on the surface of the anilox roller.
- The special staggered engraving lets you achieve optimum printing-nip dimensions.
- The unique cellular form improves evacuation and cleaning.
- The customised levels of resolution (L/cm) and the specific staggered structure provide you with defined, optimal support for the print format, in addition to the combination area, even in the higher-resolution raster.
- The ink transfer, which is benefited by the shape of the cell, permits application with all inking systems.
- The transfer of white, lacquer, gold or silver in the course of printing and with special coating media is especially uniform and homogeneous.