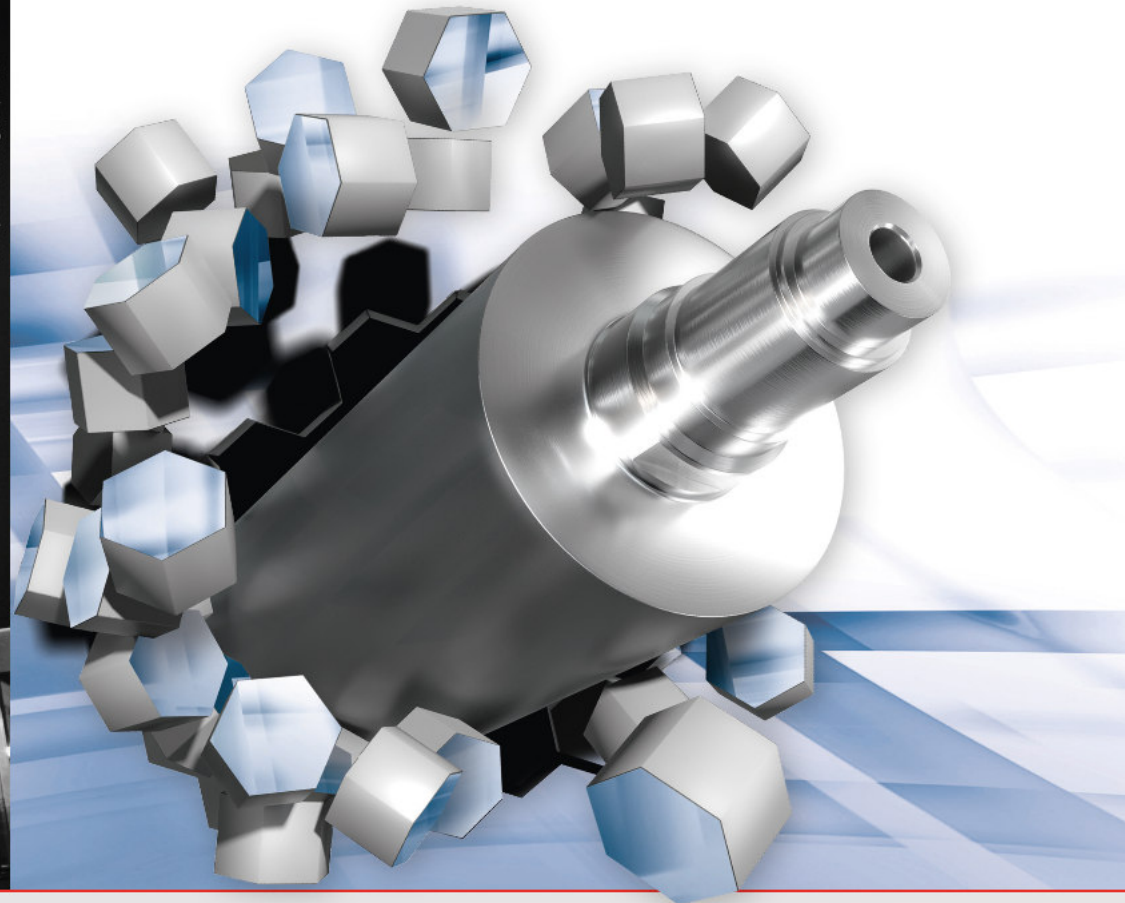


CERAMIC ENGRAVING TECHNOLOGIES

Engraving Technologies for each Area of Application



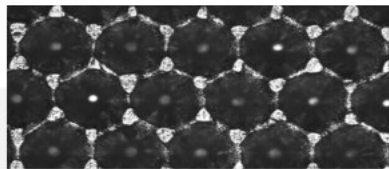
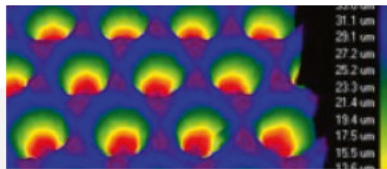
www.pmm-werbung.de | 14804



Zecher GmbH
Görlitzer Straße 2 • 33098 Paderborn • Germany
Tel. +49 5251 1746-0 • contact@zecher.com
www.zecher.com

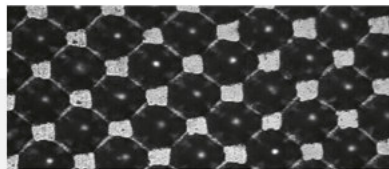
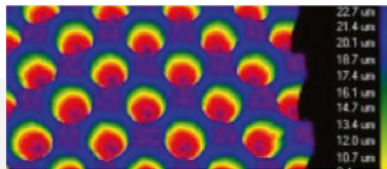


The right engraving technology for each area of application – we have the ideal anilox roller engraving to hand.



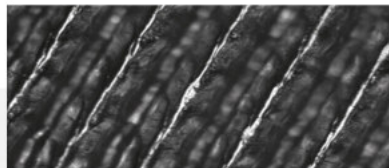
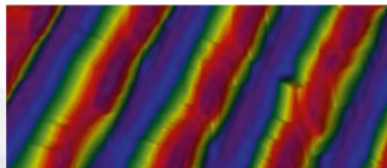
HEXA 60°

The Hexa 60° is an established standard engraving technology for high quality applications in the Flexo or Coating industry.



DIAMOND 45°

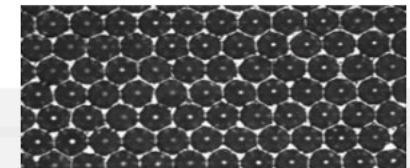
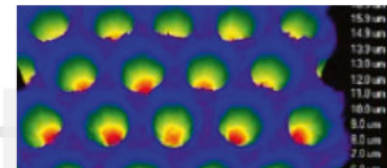
In the Flexo industry this engraving has mostly been replaced by Hexa 60° but is still used for special applications.



TRIHELICAL

The open cell engraving Trihelical, also known as "Haschur", serves to widen the standard engraving range or as a technological alternative.

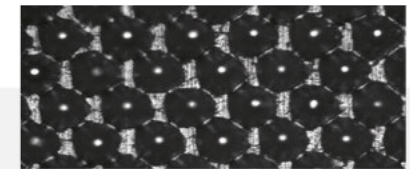
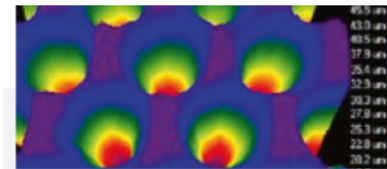
The Trihelical engraving provides a very good transfer due to the open engraving line structure, which is suitable for large-area printing and coatings.



HD READY - FULL HD

The HD Ready or Full HD Anilox enables printing in perfect HD quality.

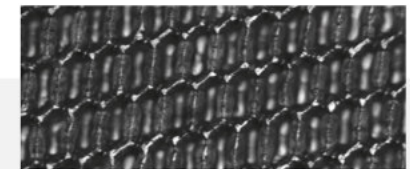
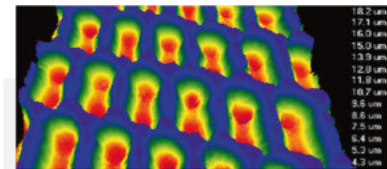
The HD Ready or Full HD engraving is an Esko certified engraving for high resolution applications.



H.I.T.

The open cell engraving H.I.T. serves to widen the standard engraving range or as a technological alternative. The H.I.T. is a classic 60° engraving, characterised by

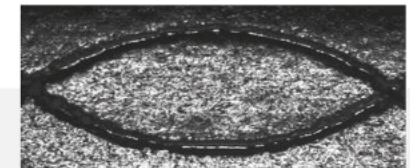
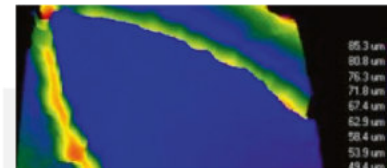
specially engraved hanging cell walls. The intentionally reduced cell walls help to minimize the pinhole effect especially in applications of white and varnish.



STEPPEDHEX

The open cell engraving SteppedHex serves to widen the standard engraving range or as a technological alternative. In comparison to a standard 60° engraving, the SteppedHex

technology offers the possibility to increase the resolution without losing volume, due to a unique cell connection. Also this engraving is based on the 60° angle.



CUSTOMISED

We are able to manufacture special laser engravings which are based on individually designed TIFF data.

By this, special shapes and application ranges can be covered.